

# ChromaZona

## Software Installation - Quick Guide

1

### Start PC

➔ Log onto PC as an Administrator and shut all running software down

2

### Insert the Synbiosis USB flash drive

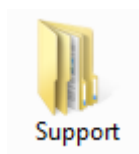
\* note: all new ChromaZona systems are shipped with the latest stable version of the ChromaZona software

Browse to the flash drive in Windows, open the “**ChromaZona (version\*)**” folder and then run the “Setup.exe” program.

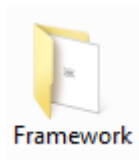
3

The PC may require a Windows update (particularly if the PC is Windows XP, Windows Vista or Windows 7). If you are presented with a message stating “**This application needs Microsoft .Net Framework 4.0 full version which is not yet installed. This can be found in the Support directory.**”, then follow step 3, otherwise proceed to step 4

### Support folder



➔ Open the Support folder



➔ Open the Framework folder



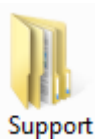
➔ Run SetupFramework.exe. Follow the on-screen instructions, performing a system restart if prompted

➔ Run Setup.exe once again and follow the on-screen instructions

4

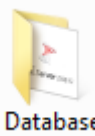
ChromaZona software utilises Microsoft's SQL Server. If this is not already present on the PC you will receive a message stating **"This application requires SQL Server Express or SQL Express LocalDB, neither of which is yet installed on this computer. Do you wish to continue with the installation of ChromaZona software (Press OK) or cancel and install a database engine?"** If you already have a SQL server at a remote location press OK and go to step 5, otherwise press Cancel and follow step 4

## Install SQL Server



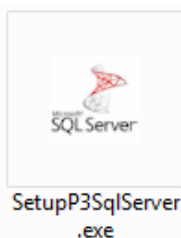
Support

➡ Open the Support folder



Database

➡ Open the Database folder



SetupP3SqlServer.exe

➡ Run SetupP3SqlServer.exe (see ChromaZona SQL Installation QG for details within Installation -> Manuals-> Quick Guides) and perform a PC restart on completion

**PLEASE NOTE:** SQL LocalDB Express is designed for a single PC user. A single user should log onto the PC and, if there is more than one user running the ChromaZona software, they should enter their details within the ChromaZona software. **If more than one user is going to log onto Windows on the PC running ChromaZona software, you should install, and use, SQL Server Express**

5



Setup.exe

➡ Run Setup.exe once again and follow the on-screen instructions (see ChromaZona Full Installation Guide for details within Installation -> Manuals-> Quick Guides)

6

## Connect the ChromaZona



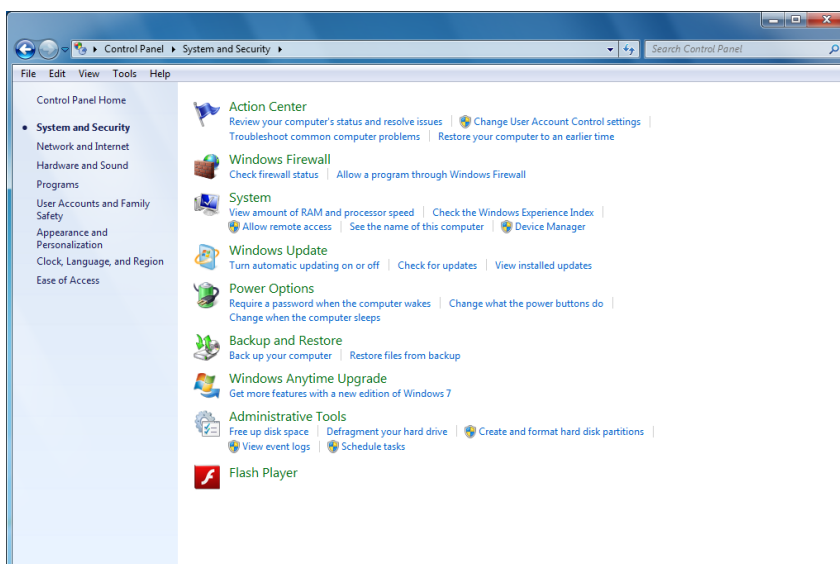
- ➔ Connect the power cord to the ChromaZona and plug the unit in
- ➔ Connect the camera USB cable from the ChromaZona unit to a spare USB port in the PC
- ➔ Switch on the ChromaZona using the switch on the side of the unit

7

## Adding users to SQL Server

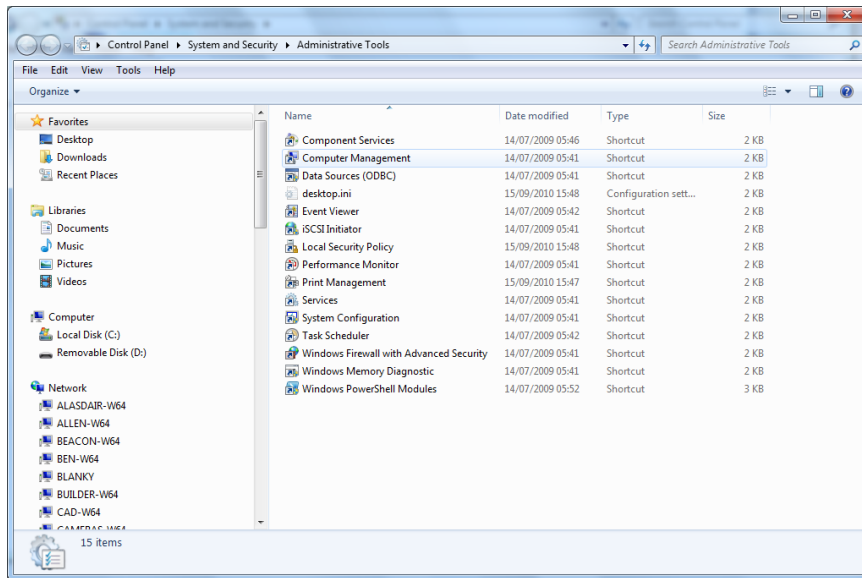
The following steps need to be carried out when logged in as Administrator

**When ChromaZona is installed, a users groups is created called ChromaZona Users. Every user needs to be a member of this group**



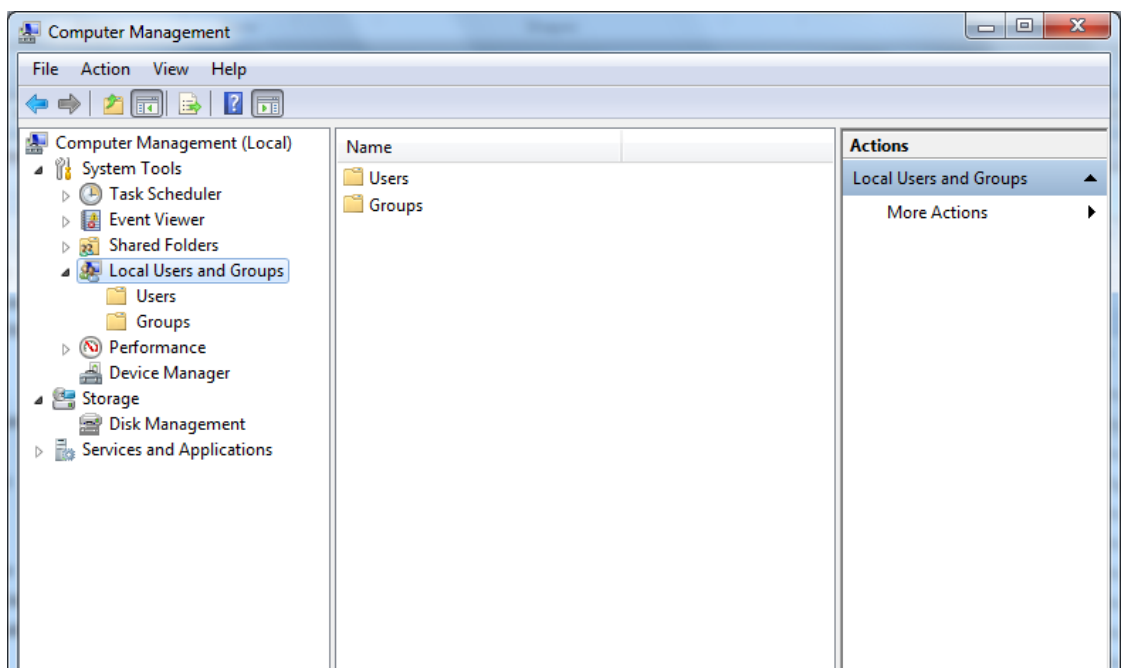
Access the computer control panel and select 'System and Security' then select 'Administrative Tools'

8



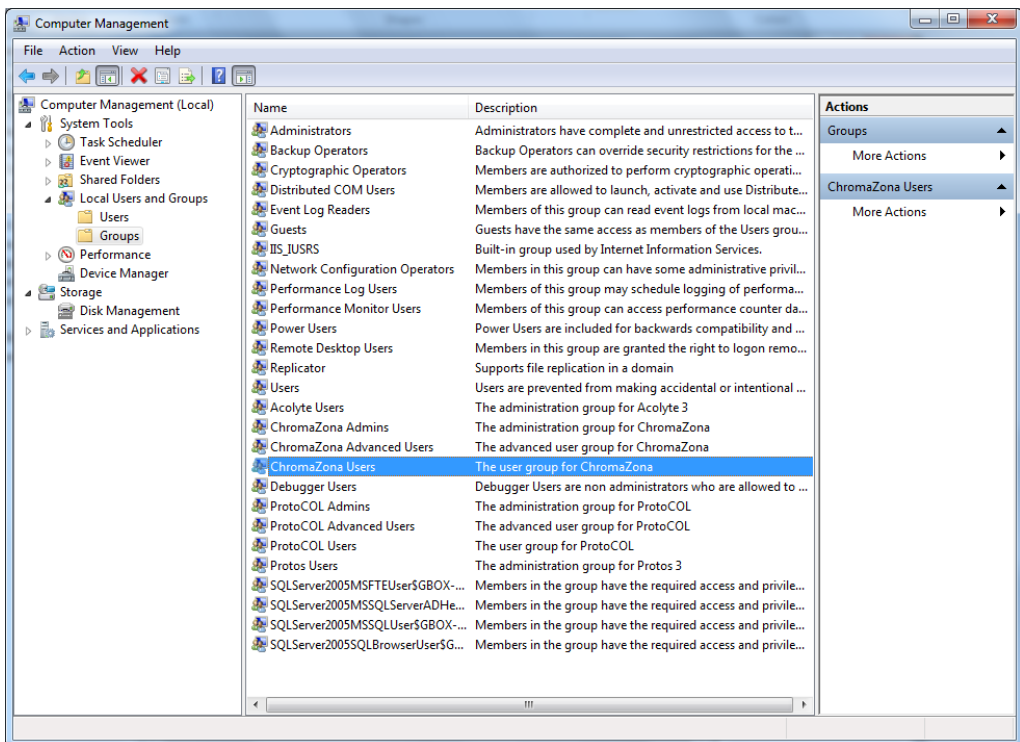
Select Computer Management by double clicking

9



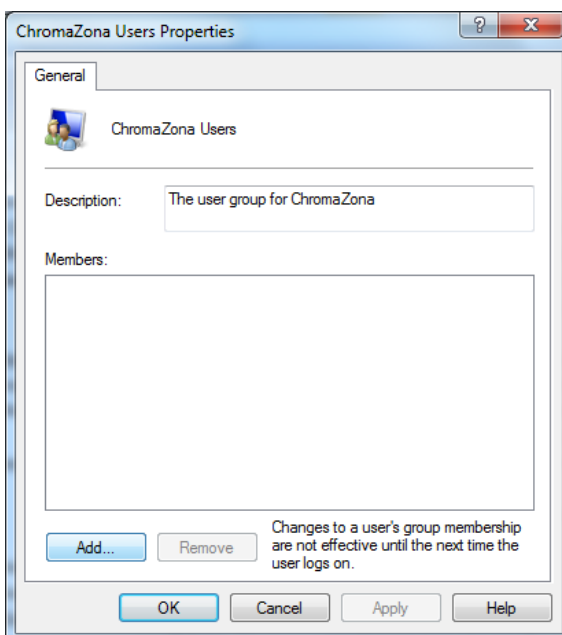
Select local Users and Groups and then click on Groups

10



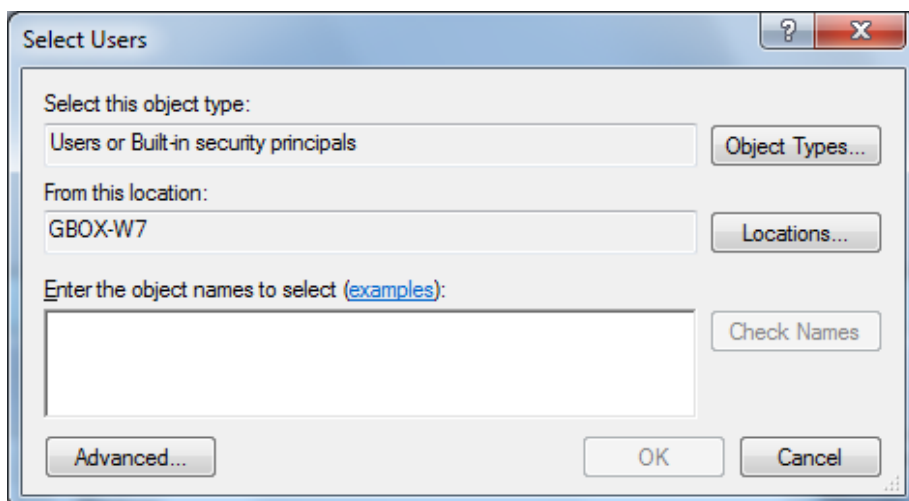
Double click on ChromaZona Users to open the ChromaZona User Properties window

11



Click Add

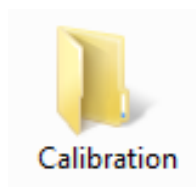
12



To add a single user add their windows log in name and click Check Names

13

## Run configuration Installation



- ➔ Open the Calibration folder
- ➔ Double click on Setup Calibration
- ➔ Follow the on screen instructions

14

## Run ChromaZona software

Log on to the software and ensure the lights cycle Red, Blue and Green. Click on the image tab and select live image to ensure the Camera produces a live image

**ChromaZona is now ready to be used**

### CONTACT SYNBIOSIS:

EUROPE:  
Tel: +44 (0)1223 727125  
Email: [support@synbiosis.com](mailto:support@synbiosis.com)

USA:  
Tel: 800 686 4451/301 662 2863  
Email: [support@synbiosis.com](mailto:support@synbiosis.com)